

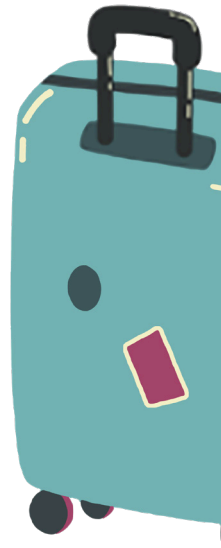
EQUIPMENT GENERAL

For your well-being: All rooms and public areas in the hotel are equipped with an automatic ventilation system. This ensures that preheated fresh air constantly flows from the outside to the inside while stale air is extracted from the inside to the outside.

For your sound and restful sleep all rooms are equipped with modern soundproof windows. Rooms are darkened by automatic

blinds. In rooms with balconies the blinds only cover up to the height of the balcony furniture. The rooms are equipped with blackout curtains.

The ventilation system can be controlled via the control by the bathroom door.



CHECK OUT

On departure day, the rooms and suites are available until 11:00 a.m. Tip: To reduce waiting times at check-out, you can settle your bill before breakfast or even on the evening before your departure.

For questions, requests and suggestions our reception crew is happy to help you via the concierge daily from 7:00 a.m. to 10:00 p.m.

WhatsApp Concierge: 0177 596 50 57

DUZEN

„Kindness is everything!“ At Papa Rhein everyone is on a first-name basis - guests & crew! We want to be your temporary home, for friends & among friends!

INTERNET

Select the guest network and surf free of charge.

NIGHT ENTRANCE

The night entrance is located on the left next to the main entrance. The door can be opened with your room card.

PARKING

At the reception we will validate your parking ticket for the entire stay free of charge. The parking ticket can already be validated upon arrival.



OPENING TIMES



BREAKFAST

Breakfast in the **BOOTSHAUS** restaurant is available from 7:00 to 11:00 a.m.

RESTAURANTS

The **BOOTSHAUS** is open for lunch daily from Tuesday to Sunday from 12:30 p.m. to 1:30 p.m. (à la carte). The **BOOTSHAUS** is open for dinner from Tuesday to Sunday. We serve a 3-course menu, you can make reservations for two seatings. The first seating starts at 6:00 p.m., and the second seating starts at 8:00 p.m. Please always make reservations in advance. We also recommend early reservations for public holidays and bridging days.

The **LIDO Restaurant** is open Thursday to Monday from 2:00 p.m. to 10:00 p.m. You can look forward to a delicious selection of Italian classics. Antipasti, delicious pasta dishes and creamy tiramisu – Italian vibes at **PAPA RHEIN**.

BARS

The **BOOTSHAUS Bar** is open Monday to Sunday from 5:00 p.m. to 24:00 a.m. On Tuesdays and Wednesdays our **LIDO Bar** is open for you from 12:00 a.m. to 24:00 p.m.

SPA

The **Hafen Spa** pool opens, daily from 8:00 a.m. to 10:00 p.m. The outdoor pool on the **Lido Deck**, remains open between April and October. The **Hafen Spa** saunas open, daily from 10:00 a.m. to 10:00 p.m.. Our gym, daily from 8:00 a.m. to 10:00 p.m. Cosmetic and massage treatments, daily from 10:00 a.m. to 6:00 p.m.

SMOKING

Please note that smoking is only permitted in the outdoor areas.

CLEANING

The rooms and suites are cleaned daily. If you do not require your room to be serviced, we will credit you 5 EUR per day as a discount. Please let the reception know one evening in advance.

SHOP

Would you like to take a little **Papa Rhine** feel home with you? No problem at all. Our hotel shop is located next to the reception. You will find all kinds of our favourite items to take home with you.



TRUSTBAR

Instead of a minibar in your room, you will find our **Trustbar** on the **LIDO Deck** instead – simply fill the little card and take with you whatever you desire! Our suites are equipped with minibars and coffee machines!

PAYMENT METHODS

We accept all major credit cards, debit cards and cash.



1. ABBEY ST. HILDEGARDIS

in Rüdesheim on the Rhine

The Benedictine nuns founded the abbey in 1904 in tradition of Hildegard von Bingen. The abbey with its church, shop and café in the middle of the vineyards is one of the most famous destinations in the Rheingau.

www.abtei-st-hildegard.de

2. MUSEUM AM STROM, Bingen

The museum invites you to fascinating encounters with 2000 years of culture and history on the Rhine. Permanent & special exhibitions on Hildegard von Bingen, Rhine Romanticism and the history of the town are presented in front of the magnificent scenery of the Binger Loch in the historic power station dating from 1898.

www.bingen.de/kultur/museum-am-strom

3. TORTURE MUSEUM, Rüdesheim on the Rhine

Around 144 torture instruments as well as an extensive picture gallery, drawings and etchings impressively illustrate the cruelty of the Inquisition.

www.foltermuseum.com

4. CULTURAL WATER-FRONT, Bingen

Partnership gardens, sculptures, playgrounds, cafés, restaurants, the piers for passenger ships, events ... while being a historical site of rare significance. The Bingen water-front forms the gateway to the UNESCO World Heritage Site „Upper Middle Rhine Valley“.

www.bingen.de/kulturufer

5. GÜNDERODEHAUS, Oberwesel

The „Günderode“ film house by Bollands (with a restaurant and café) from the cult film “Heimat 3” TV series offers one of the most beautiful views over the Rhine valley and the towers of the historic old town. The name is based on a legend, created by film director Edgar Reitz. More than 200 years ago, the famous poet Carolin von Günderode (1780-1806) is said to have lived and loved here.

www.guenderodehaus.de

6. GERMANIA (NIEDERWALD MONUMENT)

Rüdesheim

The Niederwald Monument in Rüdesheim with its statue of Germania is one of the most famous sights on the Middle Rhine. You can reach the monument by foot, by car or by gondola in the summertime.

www.niederwalddenkmal.de

7. LAMA-ERLEBNISHOF, Eltville

In the Rheingau region, the adventure farm Kisselmühle offers trekking tours with llamas, alpacas or camels.

www.kisselmuehle.de

8. RHEIN-WEINWELT, Rüdesheim on the Rhine

Located in the historic Asbach building now, wine flows into the glass instead of brandy. 76 wineries invite you to taste their wines with tokens and dispensers. Admission free of charge!

www.rheinweinwelt.de

9. VINOTHEK HEMMES, Bingen

The traditional winery collects one prize after the other and offers wine tastings in the lovingly restored old village school.

www.weingut-hemmes.de

10. MARKSBURG in Braubach

The 12th century Marksburg Castle is located above Braubach and is the only undamaged medieval hilltop castle on the Middle Rhine.

www.marksburg.de

11. Hiking the BINGER FOREST

FAMILY TIP!

The adventure trail is 4.5 kilometres long. Upside down roots, literary tales, forest sounds, a Roman Villa Rustica, a suspension bridge over a gorge - the trail is an invitation to visitors of all ages to let nature work its magic. The Bingen forest mouse accompanies you along the path and provides information on how to actively experience of nature.

www.erlebnispfad-bingen.de



Ahoi
& WELCOME!

GUESTS
ABC
COMPACT